



KINGS COLLEGE OF ENGINEERING (AUTONOMOUS)

NAAC Accredited Institution

Approved by AICTE, New Delhi

Affiliated to Anna University, Chennai.

ACADEMIC YEAR – 2024-25

INTERNAL QUALITY ASSURANCE CELL

EXIT SURVEY REPORT

(2020-24 BATCH)

QUESTIONNAIRE

About Infrastructural Facilities (5 being highest)

1. How do you rate classroom ambience (1-Needs improvement, 2-Fair, 3-Good, 4-Very Good 5-Extremely Good)
2. How do you rate Lab facilities (1-Needs improvement, 2-Fair, 3-Good, 4-Very Good 5-Extremely Good)
3. How do you rate Library facilities (1-Needs improvement, 2-Fair, 3-Good, 4-Very Good 5-Extremely Good)
4. Transport Facility - if availed (1-Needs improvement, 2-Fair, 3-Good, 4-Very Good 5-Extremely Good)
5. Hostel facility - if availed (1-Needs improvement, 2-Fair, 3-Good, 4-Very Good 5-Extremely Good)

About Teaching-Learning -Assessment practices (5 being highest)

1. Question Bank structure, content & usage(1-Needs improvement, 2-Fair, 3-Good, 4-Very Good 5-Extremely Good)
2. Lab Manual structure, content & usage (1-Needs improvement, 2-Fair, 3-Good, 4-Very Good 5-Extremely Good)
3. e-Material content & usage (1-Needs improvement, 2-Fair, 3-Good, 4-Very Good 5-Extremely Good)
4. Teaching methodology adopted by faculty members (1-Needs improvement, 2-Fair, 3-Good, 4-Very Good 5-Extremely Good)
5. Do you agree - Learning Outcome for the courses is met (Strongly agree, Agree, Neutral, Disagree, Strongly disagree)
6. Any specific recommendation / suggestions / appreciations related to Teaching-Learning practices
7. How do you rate the Value Addition initiatives offered during the course of study(Relevance & Effectiveness)
8. Any suggestions related to student support
9. Among the Value addition courses offered which course(s) you found very effective
10. What area(s) do you think to be given more focus?
11. Any suggestions related to internal examinations
12. Any specific recommendation/ suggestions related to learning materials
13. Rate Student Skill Enrichment practices (scale1-5, Fair(1)-Extremely good(5))
14. Rate effectiveness of Internal Counseling sessions(scale1-5, Fair(1)-Extremely good(5))
15. Rate provision of student feedback, suggestions system and its impact (scale1-5, Fair(1)-Extremely good(5))
16. How do you rate assessment practices (1-Needs improvement, 2-Fair, 3-Good, 4-Very Good 5-Extremely Good)
17. Fairness and transparency of assessment & evaluation practices (1-Needs improvement, 2-Fair, 3-Good, 4-Very Good 5-Extremely Good)

General

Things that you admire the most at KINGS

Areas to be strengthened at KINGS

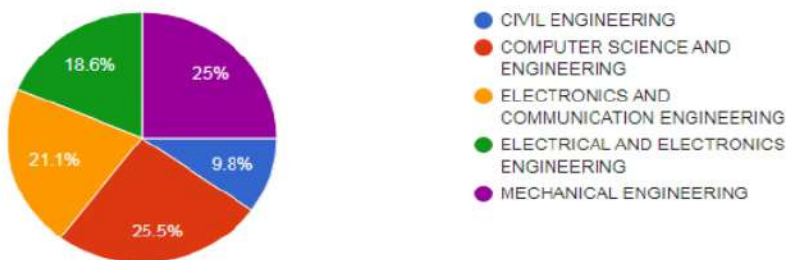
RESPONSES SUMMARY

Branchwise Responses

(243/204 students, Civil – 20/20, CSE –52/67, ECE- 43/43, EEE-38/38, Mechanical -51/75)

Branch studied

204 responses



About Infrastructural Facilities (5 being highest) results in %

1-Needs improvement, 2-Fair, 3-Good, 4-Very Good 5-Extremely Good

Qn	Feedback regarding	Year/ Scale	1	2	3	4	5
1	How do you rate classroom ambience	2021	4.4	3.4	21.4	29.6	41.3
		2022	2.3	3.4	18.9	29.1	46.3
		2023	7.6	4.1	19.3	23.4	45.5
		2024	7.8	7.4	19.6	26.5	38.7
2	How do you rate Lab facilities	2021	5.3	8.7	25.7	24.3	35.9
		2022	4	8	19.4	32.6	36
		2023	6.2	5.5	16.6	29.7	42.1
		2024	9.3	9.3	19.1	28.4	33.8
3	How do you rate Library facilities	2021	2.4	4.4	19.9	31.1	42.2
		2022	2.9	2.9	12.6	28	53.7
		2023	4.1	1.4	15.9	25.5	53.1
		2024	6.4	6.4	16.2	36.5	44.6
4	Transport Facility - if availed	2021	6	8	25.4	26.4	34.3
		2022	5.3	5.3	24	25.1	40.4
		2023	8.5	6.3	16.9	26.1	42.3
		2024	2.5	7.9	17.8	25.7	46

Qn	Feedback regarding	Year/ Scale	1	2	3	4	5
5	Hostel facility - if availed	2021	9.9	7.3	25.1	19.9	37.7
		2022	6.7	8.6	21.5	29.4	33.7
		2023	12.9	5	20	19.3	42.9
		2024	13.2	8.4	21.1	24.2	33.2

About Teaching-Learning -Assessment practices (5 being highest)

Qn.	Feedback regarding	Year / Scale	1	2	3	4	5
1	Question Bank structure, content & usage	2021	1.9	1.9	18.9	33	44.2
		2022	1.7	3.4	16	30.3	48.6
		2023	2.1	2.8	16.6	28.3	50.3
		2024	7.4	2.9	20.6	26	43.1
2	Lab Manual structure, content & usage	2021	1	4.9	18.4	33	42.7
		2022	2.3	2.9	16	33.7	45.1
		2023	2.8	2.1	19.3	31	44.8
		2024	6.9	5.9	19.6	26	41.7
3	e-Material content & usage	2021	5.3	2.9	19.9	30.1	41.7
		2022	1.7	2.3	13.7	37.1	45.1
		2023	2.8	1.4	17.9	24.8	53.1
		2024	7.4	5.9	17.2	25.5	44.1
4	Teaching methodology adopted by faculty members	2021	1.5	1.9	22.8	28.2	45.6
		2022	2.9	2.3	15.4	28.6	50.9
		2023	2.1	2.1	17.2	27.6	51
		2024	6.9	5.4	17.6	27	43.1
5	Do you agree - Learning Outcome for the courses is met	2021	23.8	2.4	29.6	39.3	4.9
		2022	6.9	1.7	24.6	42.9	24
		2023	3.4	3.4	20	35.9	37.2
		2024	3.4	3.9	24.5	31.9	36.3

Qn.	Feedback regarding	Year / Scale	1	2	3	4	5
6	Any specific recommendation / suggestions / appreciations related to Teaching-Learning practices	2024	Attached				
7	How do you rate the Value Addition initiatives offered during the course of study(Relevance & Effectiveness)	2023	17.9	5.5	20.7	22.8	33.1
		2024	14.2	14.7	22.1	19.1	29.9
8	Any Suggestions related to students support	2024	Attached				
9	Among the Value Addition courses which course(s) you found very effective	2025	Attached				
10	Any suggestions related to internal examinations	2024	Attached				
11	Any specific recommendation/ suggestions related to learning materials	2024	Attached				
12	Rate student skill enrichment practices	2021	2.9	1.9	23.3	30.1	41.7
		2022	2.3	4	12	34.3	47.4
		2023	2.8	2.1	15.9	30.3	49
		2024	4.4	6.9	26	23.5	39.2
13	Rate effectiveness of Internal counseling sessions	2021	1.5	4.4	17	33.5	43.7
		2022	0.6	6.9	9.7	33.7	49.1
		2023	3.4	1.4	16.6	28.3	50.3
		2024	5.9	7.4	18.1	27.9	40.7
14	Rate provision of student feedback, suggestions system and its impact	2021	2.9	5.3	23.3	28.6	39.8
		2022	1.7	4.6	12	36	45.7
		2023	2.8	3.4	16.6	29	48.3
		2024	6.9	4.4	22.5	25.5	40.7
15	How do you rate assessment practices	2021	1.9	4.4	23.3	33.5	36.9
		2022	1.7	4	13.7	33.1	47.4
		2023	3.4	1.4	17.2	31	46.9
		2024	5.4	6.9	21.6	25.5	40.7

16	Fairness and transparency of assessment & evaluation practices	2021	1.5	3.9	20.9	36.4	37.4
		2022	1.7	5.1	15.4	31.4	46.3
		2023	2.8	6.2	17.2	24.1	49.7
		2024	3.9	8.3	23.5	23	41.2

General

Qn.	Feedback regarding	Responses
1	Things that you admire the most at KINGS	Attached
2	Areas to be strengthened at KINGS	

K. Abhirami
14/8/24

IQAC Coordinator

Dr. K. Abhirami
IQAC Coordinator
Kings College of Engineering
(Autonomous)
Punakulam - 613 303

J. M. Muthu
14/8/24

PRINCIPAL

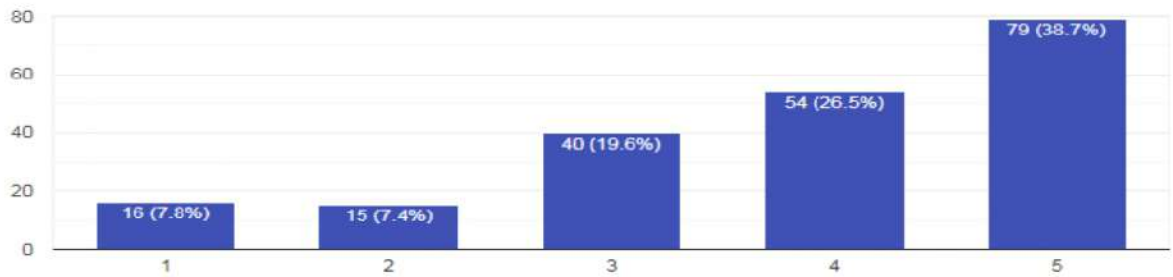
Principal
Kings College of Engineering
(Autonomous)
Punakulam - 613 303

QUESTIONWISE RESPONSES

About Infrastructural facilities (5 being highest in scale)

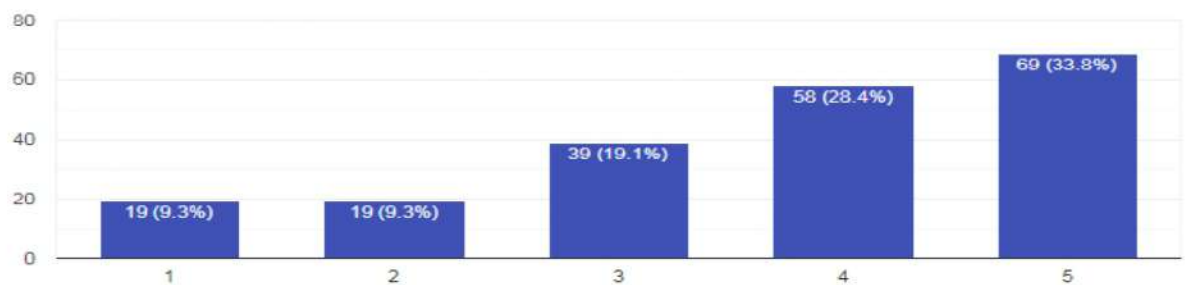
How do you rate classroom ambience (1-Needs improvement, 2-Fair, 3-Good, 4-Very Good 5-Extremely Good)

204 responses



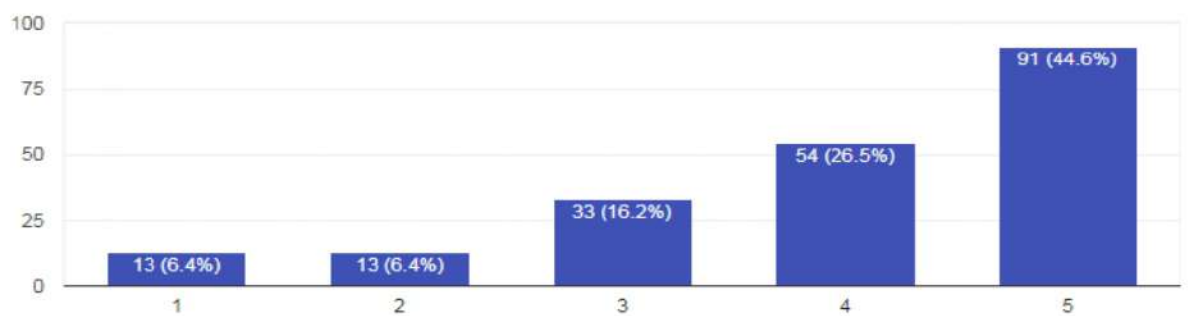
How do you rate Lab facilities (1-Needs Improvement, 2-Fair, 3-Good, 4-Very Good 5-Extremely Good)

204 responses



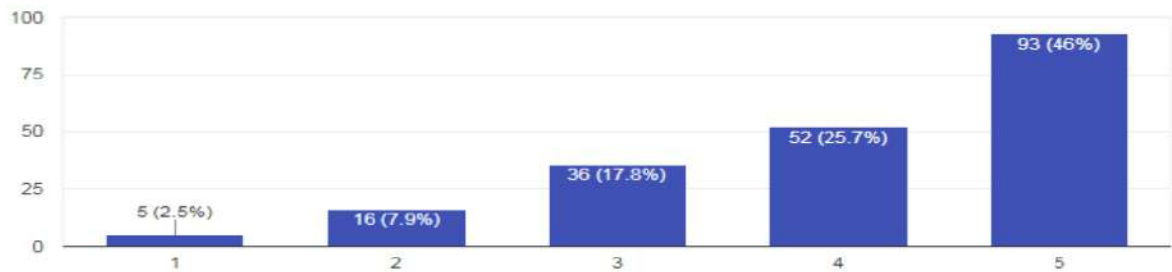
How do you rate Library facilities (1-Needs improvement, 2-Fair, 3-Good, 4-Very Good 5-Extremely Good)

204 responses



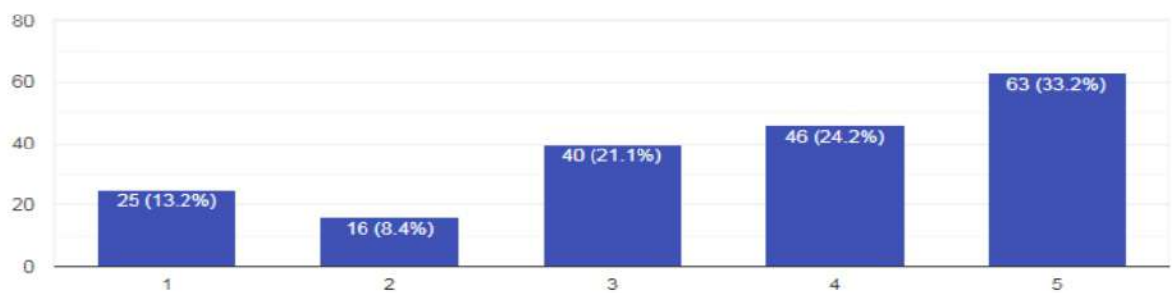
Transport Facility - if availed (1-Needs improvement, 2-Fair, 3-Good, 4-Very Good 5-Extremely Good)

202 responses



Hostel facility - if availed (1-Needs improvement, 2-Fair, 3-Good, 4-Very Good 5-Extremely Good)

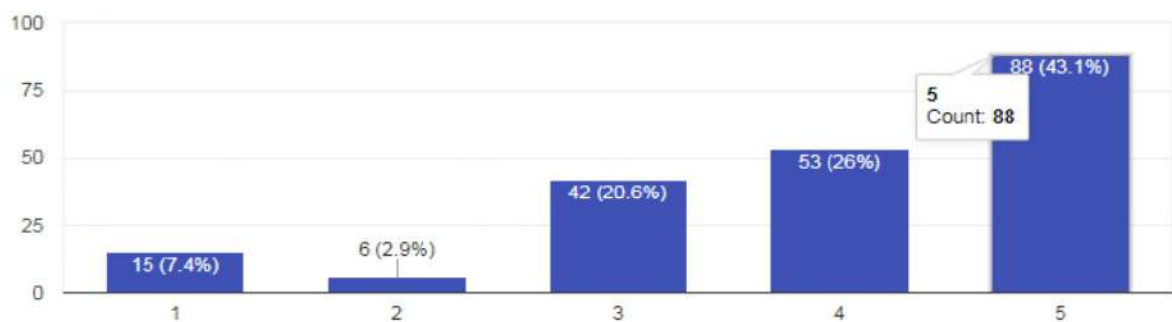
190 responses



About Teaching-Learning -Assessment practices & Support system

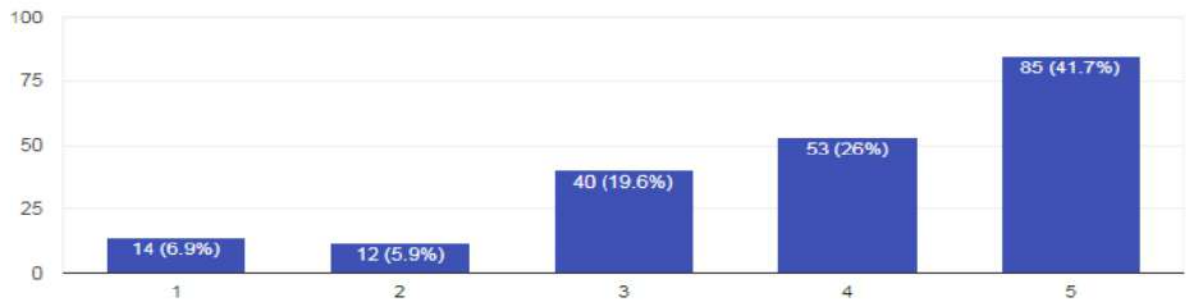
Question Bank structure, content & usage(1-Needs improvement, 2-Fair, 3-Good, 4-Very Good 5-Extremely Good)

204 responses



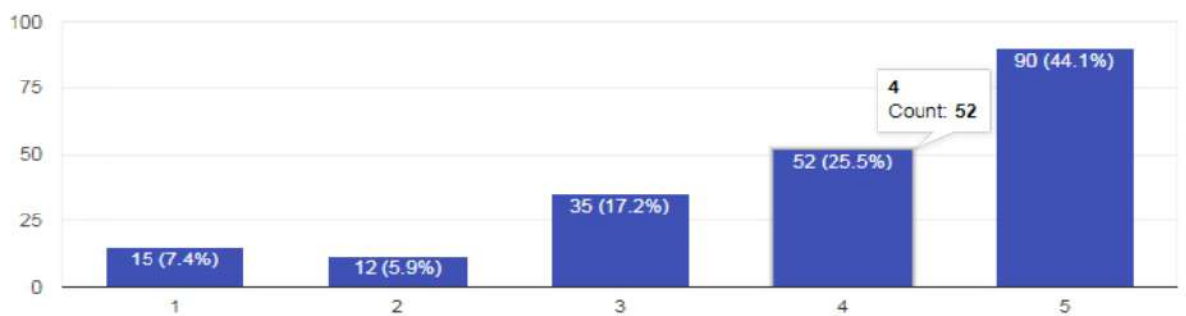
Lab Manual structure, content & usage (1-Needs improvement, 2-Fair, 3-Good, 4-Very Good 5-Extremely Good)

204 responses



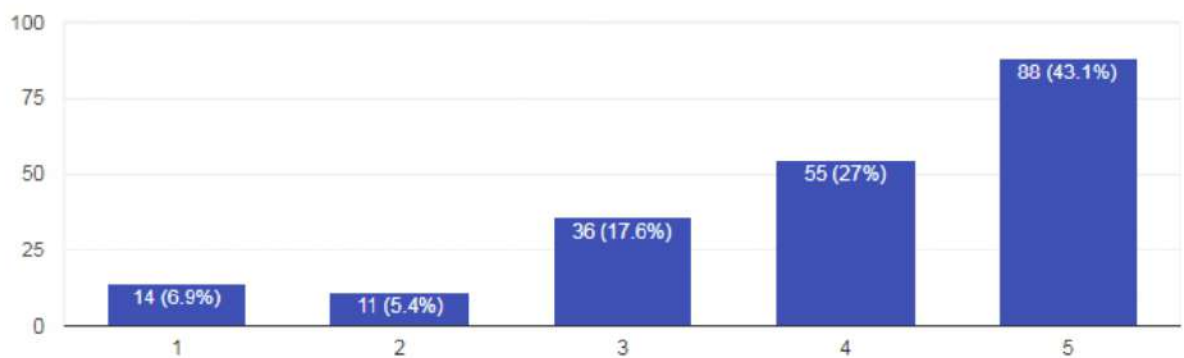
e-Material content & usage (1-Needs improvement, 2-Fair, 3-Good, 4-Very Good 5-Extremely Good)

204 responses



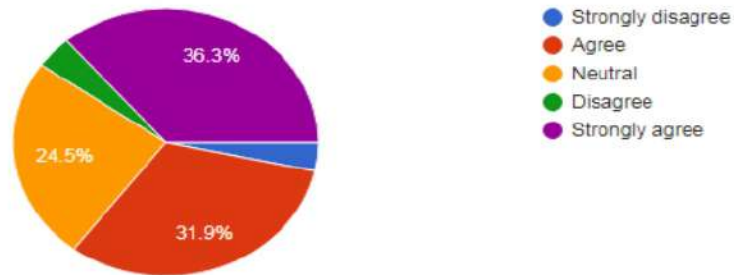
Teaching methodology adopted by faculty members (1-Needs improvement, 2-Fair, 3-Good, 4-Very Good 5-Extremely Good)

204 responses



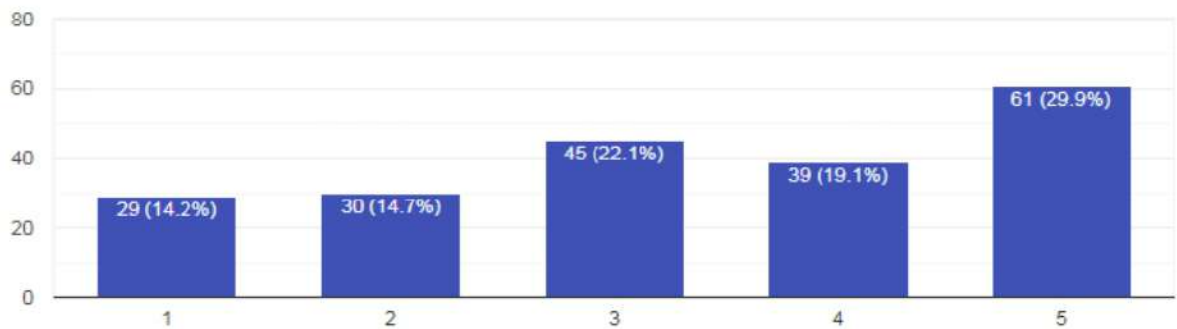
Do you agree - Learning Outcome for the courses is met

204 responses



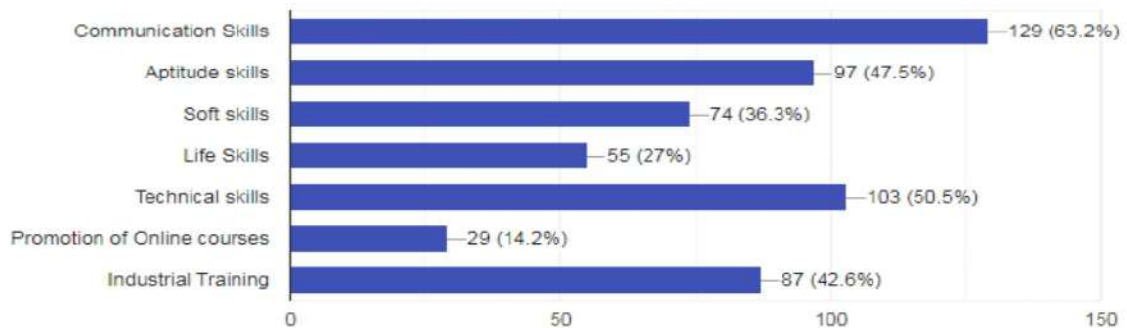
How do you rate the value addition initiatives offered during the course of study (relevance and effectiveness)

204 responses



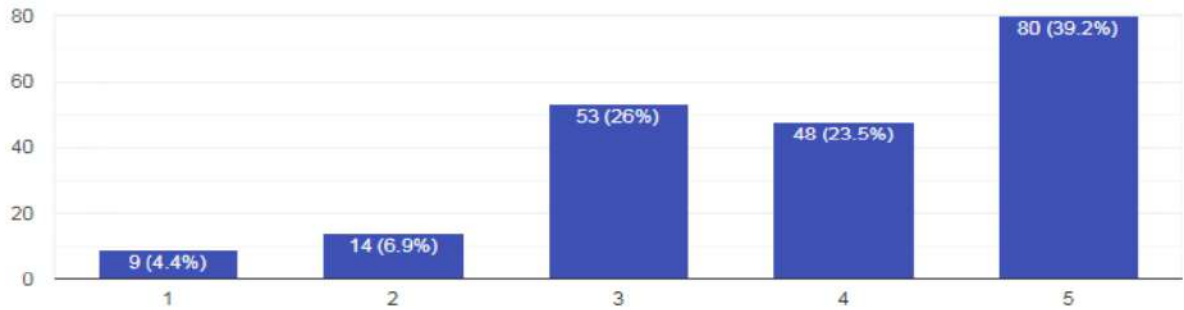
What area(s) do you think to be given more focus?

204 responses



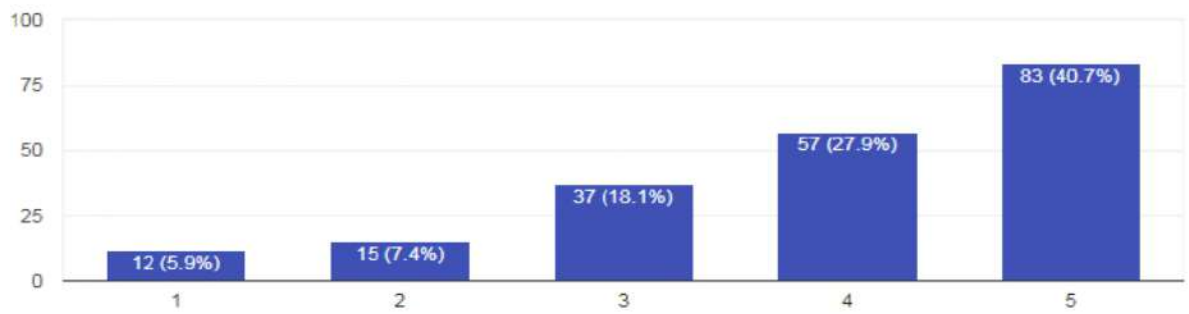
Rate Student Skill Enrichment practices

204 responses



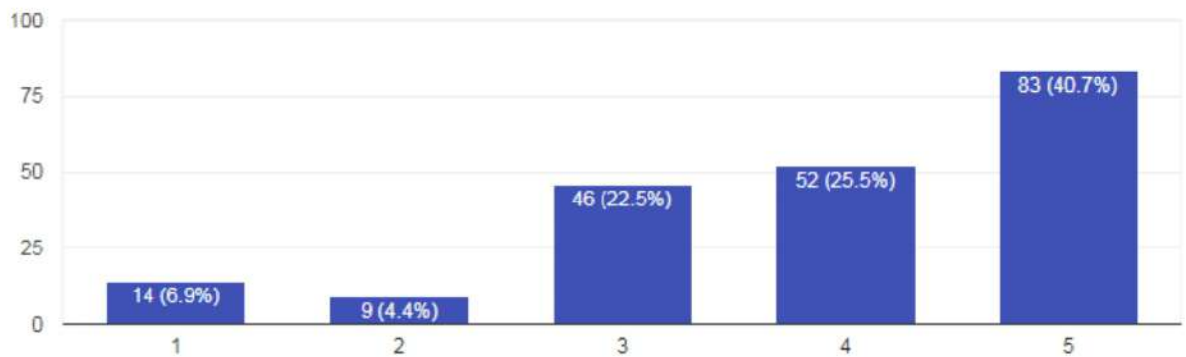
Rate effectiveness of Internal Counseling sessions

204 responses



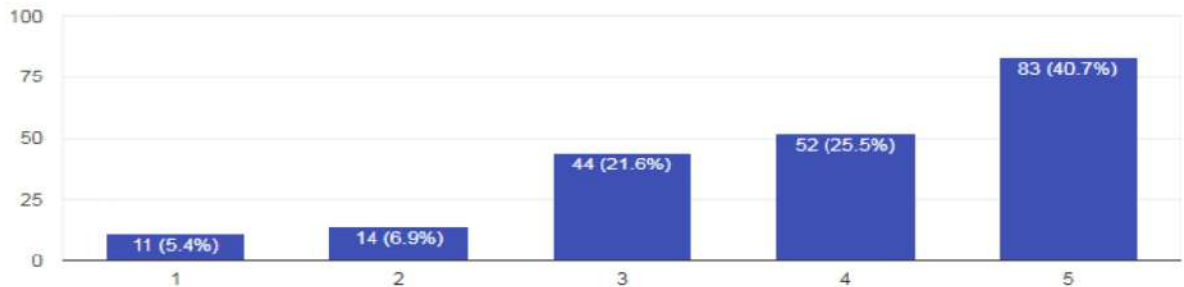
Rate provision of student feedback, suggestions system and its impact

204 responses



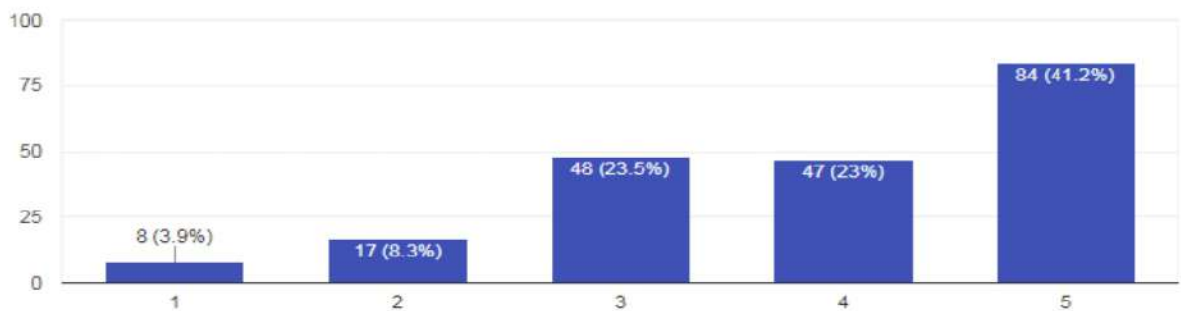
How do you rate assessment practices (1-Needs improvement, 2-Fair, 3-Good, 4-Very Good 5-Extremely Good)

204 responses



Fairness and transparency of assessment & evaluation practices (1-Needs improvement, 2-Fair, 3-Good, 4-Very Good 5-Extremely Good)

204 responses



K. Abhirami
14/8/24

IQAC Coordinator

Dr. K. Abhirami
IQAC Coordinator
Kings College of Engineering
(Autonomous)
Punakulam - 613 303

J. Mani
14/8/24

PRINCIPAL

Principal
Kings College of Engineering
(Autonomous)
Punakulam - 613 303