



**ACADEMIC YEAR – 2022-23**  
**INTERNAL QUALITY ASSURANCE CELL**  
**EXIT SURVEY REPORT**  
**(2019-23 BATCH)**

**QUESTIONNAIRE**

**About Infrastructural Facilities (5 being highest)**

1. How do you rate classroom ambience (1-Needs improvement, 2-Fair, 3-Good, 4-Very Good 5-Extremely Good)
2. How do you rate Lab facilities (1-Needs improvement, 2-Fair, 3-Good, 4-Very Good 5-Extremely Good)
3. How do you rate Library facilities (1-Needs improvement, 2-Fair, 3-Good, 4-Very Good 5-Extremely Good)
4. Transport Facility - if availed (1-Needs improvement, 2-Fair, 3-Good, 4-Very Good 5-Extremely Good)
5. Hostel facility - if availed (1-Needs improvement, 2-Fair, 3-Good, 4-Very Good 5-Extremely Good)

**About Teaching-Learning -Assessment practices (5 being highest)**

1. Question Bank structure, content & usage (1-Needs improvement, 2-Fair, 3-Good, 4-Very Good 5-Extremely Good)
2. Lab Manual structure, content & usage (1-Needs improvement, 2-Fair, 3-Good, 4-Very Good 5-Extremely Good)
3. e-Material content & usage (1-Needs improvement, 2-Fair, 3-Good, 4-Very Good 5-Extremely Good)
4. Teaching methodology adopted by faculty members (1-Needs improvement, 2-Fair, 3-Good, 4-Very Good 5-Extremely Good)
5. Do you agree - Learning Outcome for the courses is met (Strongly agree, Agree, Neutral, Disagree, Strongly disagree)
6. How do you rate the Value Addition initiatives offered during the course of study (Relevance & Effectiveness)
7. Rate Student Skill Enrichment practices (scale 1-5, Fair(1)-Extremely good(5))
8. Rate effectiveness of Internal Counseling sessions (scale 1-5, Fair(1)-Extremely good(5))
9. Rate provision of student feedback, suggestions system and its impact (scale 1-5, Fair(1)-Extremely good(5))
10. How do you rate assessment practices (1-Needs improvement, 2-Fair, 3-Good, 4-Very Good 5-Extremely Good)
11. Fairness and transparency of assessment & evaluation practices (1-Needs improvement, 2-Fair, 3-Good, 4-Very Good 5-Extremely Good)

**General**

Things that you admire the most at KINGS

Areas to be strengthened at KINGS

## RESPONSES SUMMARY

### Branchwise Responses

(145 students, Civil – 21/21, CSE –48/ 49, ECE- 38/39, EEE-08/09, Mechanical -30/45)

Branch studied

145 responses



### About Infrastructural Facilities (5 being highest) results in %

1-Needs improvement, 2-Fair, 3-Good, 4-Very Good 5-Extremely Good

S.No	Question		1	2	3	4	5
1	How do you rate classroom ambience	2021	4.4	3.4	21.4	29.6	41.3
		2022	2.3	3.4	18.9	29.1	46.3
		2023	7.6	4.1	19.3	23.4	45.5
2	How do you rate Lab facilities	2021	5.3	8.7	25.7	24.3	35.9
		2022	4	8	19.4	32.6	36
		2023	6.2	5.5	16.6	29.7	42.1
3	How do you rate Library facilities	2021	2.4	4.4	19.9	31.1	42.2
		2022	2.9	2.9	12.6	28	53.7
		2023	4.1	1.4	15.9	25.5	53.1
4	Transport Facility - if availed	2021	6	8	25.4	26.4	34.3
		2022	5.3	5.3	24	25.1	40.4
		2023	8.5	6.3	16.9	26.1	42.3
5	Hostel facility - if availed	2021	9.9	7.3	25.1	19.9	37.7
		2022	6.7	8.6	21.5	29.4	33.7
		2023	12.9	5	20	19.3	42.9

**About Teaching-Learning -Assessment practices (5 being highest)**

<b>Qn.</b>	<b>Feedback regarding</b>		<b>1</b>	<b>2</b>	<b>3</b>	<b>4</b>	<b>5</b>
<b>1</b>	Question Bank structure, content & usage	2021	1.9	1.9	18.9	33	44.2
		2022	1.7	3.4	16	30.3	48.6
		<b>2023</b>	2.1	2.8	16.6	28.3	50.3
<b>2</b>	Lab Manual structure, content & usage	2021	1	4.9	18.4	33	42.7
		2022	2.3	2.9	16	33.7	45.1
		<b>2023</b>	2.8	2.1	19.3	31	44.8
<b>3</b>	e-Material content & usage	2021	5.3	2.9	19.9	30.1	41.7
		2022	1.7	2.3	13.7	37.1	45.1
		<b>2023</b>	2.8	1.4	17.9	24.8	53.1
<b>4</b>	Teaching methodology adopted by faculty members	2021	1.5	1.9	22.8	28.2	45.6
		2022	2.9	2.3	15.4	28.6	50.9
		<b>2023</b>	2.1	2.1	17.2	27.6	51
<b>5</b>	Do you agree - Learning Outcome for the courses is met	2021	23.8	2.4	29.6	39.3	4.9
		2022	6.9	1.7	24.6	42.9	24
		<b>2023</b>	3.4	3.4	20	35.9	37.2
<b>6</b>	How do you rate the Value Addition initiatives offered during the course of study(Relevance & Effectiveness)	<b>2023</b>	17.9	5.5	20.7	22.8	33.1
<b>7</b>	Rate student skill enrichment practices	2021	2.9	1.9	23.3	30.1	41.7
		2022	2.3	4	12	34.3	47.4
		<b>2023</b>	2.8	2.1	15.9	30.3	49
<b>8</b>	Rate effectiveness of Internal counseling sessions	2021	1.5	4.4	17	33.5	43.7
		2022	0.6	6.9	9.7	33.7	49.1
		<b>2023</b>	3.4	1.4	16.6	28.3	50.3
<b>9</b>	Rate provision of student feedback, suggestions system and its impact	2021	2.9	5.3	23.3	28.6	39.8
		2022	1.7	4.6	12	36	45.7
		<b>2023</b>	2.8	3.4	16.6	29	48.3

<b>10</b>	How do you rate assessment practices	2021	1.9	4.4	23.3	33.5	36.9
		2022	1.7	4	13.7	33.1	47.4
		<b>2023</b>	3.4	1.4	17.2	31	46.9
<b>11</b>	Fairness and transparency of assessment & evaluation practices	2021	1.5	3.9	20.9	36.4	37.4
		2022	1.7	5.1	15.4	31.4	46.3
		<b>2023</b>	2.8	6.2	17.2	24.1	49.7

  
 29/5/23  
**IQAC COORDINATOR**

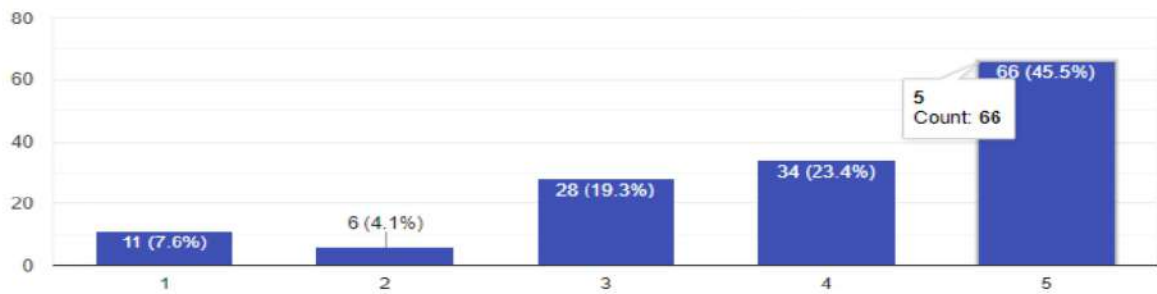
  
 29/5/2023  
**PRINCIPAL**  
**PRINCIPAL**  
 Kings College of Engineering,  
 PUNALKULAM - 613 303

## QUESTIONWISE RESPONSES

### About Infrastructural facilities (5 being highest in scale)

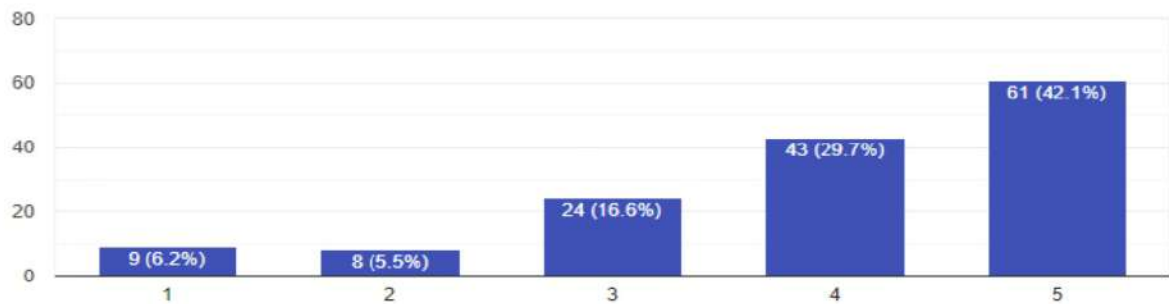
How do you rate classroom ambience (1-Needs improvement, 2-Fair, 3-Good, 4-Very Good 5-Extremely Good)

145 responses



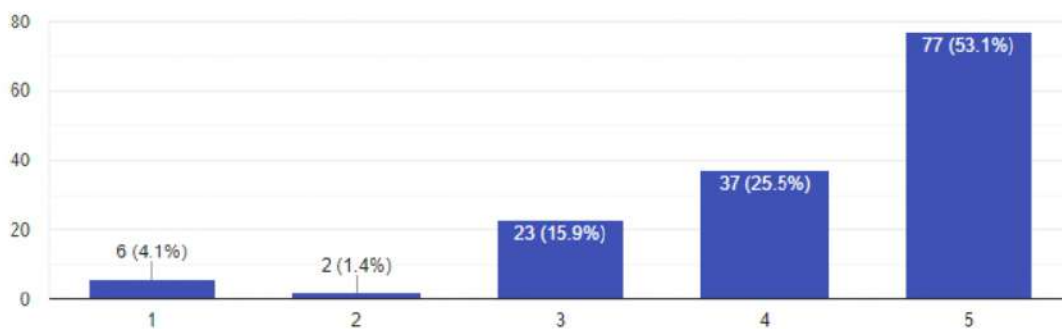
How do you rate Lab facilities (1-Needs improvement, 2-Fair, 3-Good, 4-Very Good 5-Extremely Good)

145 responses



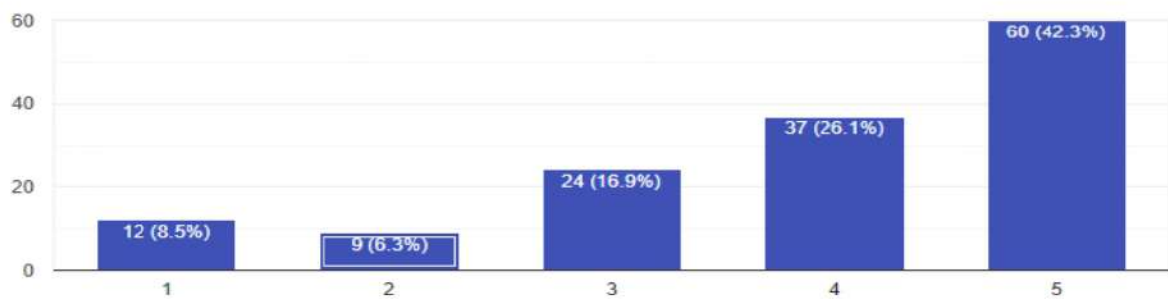
How do you rate Library facilities (1-Needs improvement, 2-Fair, 3-Good, 4-Very Good 5-Extremely Good)

145 responses



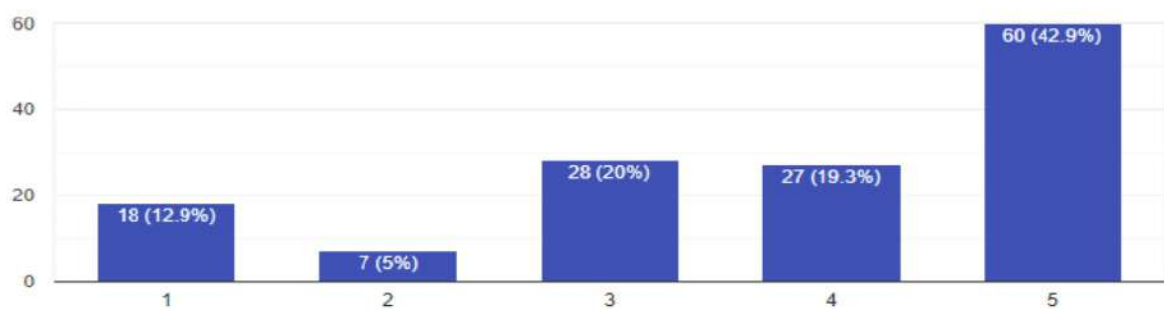
Transport Facility - if availed (1-Needs improvement, 2-Fair, 3-Good, 4-Very Good 5-Extremely Good)

142 responses



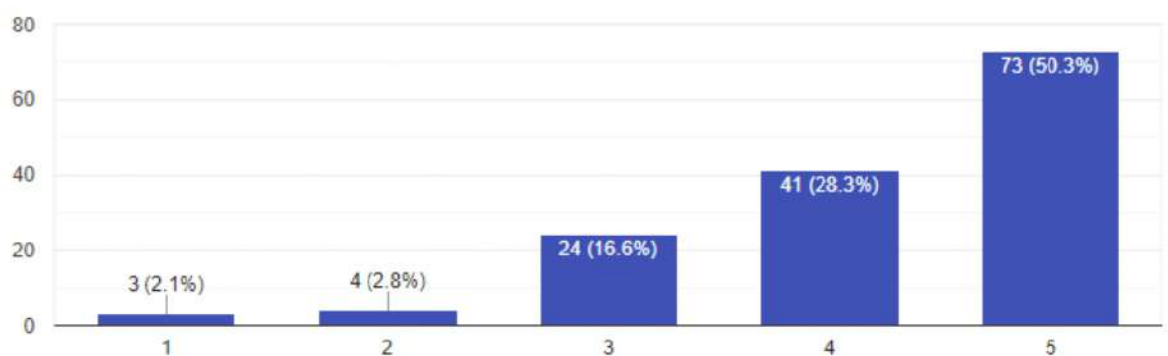
Hostel facility - if availed (1-Needs improvement, 2-Fair, 3-Good, 4-Very Good 5-Extremely Good)

140 responses



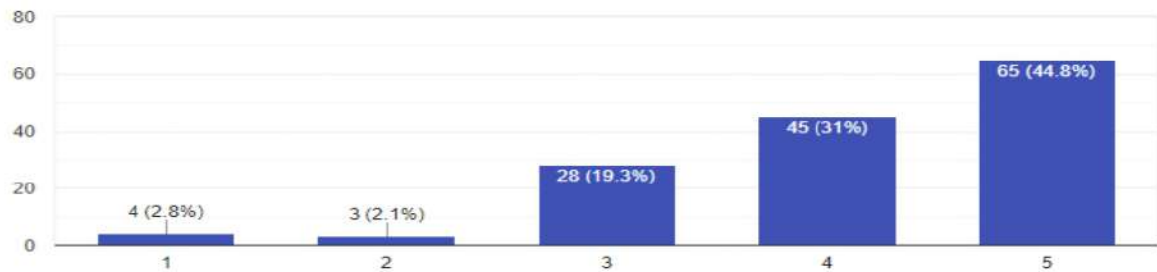
Question Bank structure, content & usage(1-Needs improvement, 2-Fair, 3-Good, 4-Very Good 5-Extremely Good)

145 responses



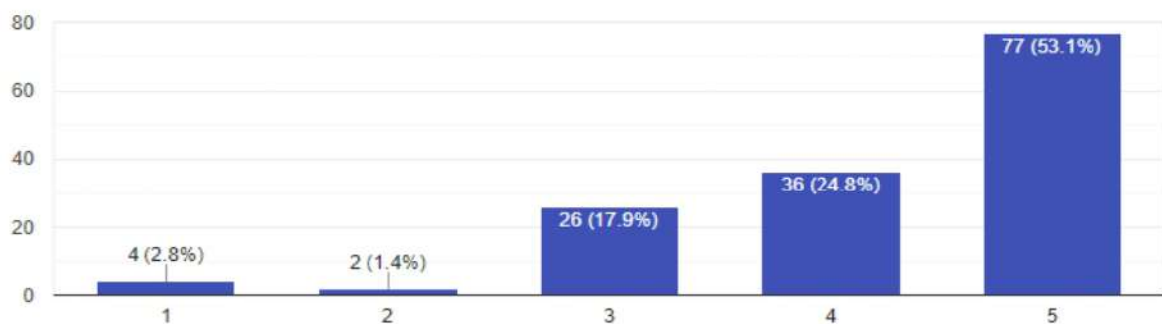
Lab Manual structure, content & usage (1-Needs improvement, 2-Fair, 3-Good, 4-Very Good 5-Extremely Good)

145 responses



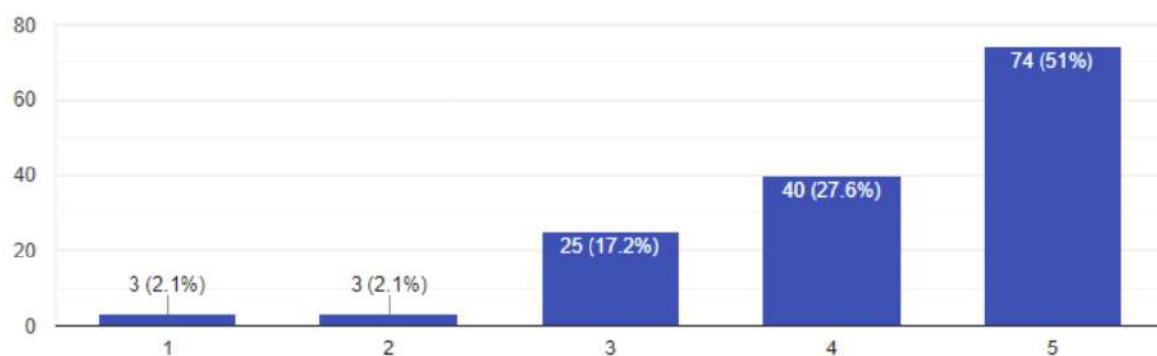
e-Material content & usage (1-Needs improvement, 2-Fair, 3-Good, 4-Very Good 5-Extremely Good)

145 responses



Teaching methodology adopted by faculty members (1-Needs improvement, 2-Fair, 3-Good, 4-Very Good 5-Extremely Good)

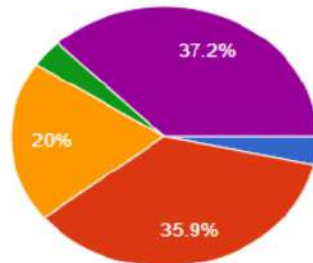
145 responses





Do you agree - Learning Outcome for the courses is met

145 responses



- Strongly disagree
- Agree
- Neutral
- Disagree
- Strongly agree

*K. Chellappa*  
29/5/23

**IQAC COORDINATOR**

*J. Mani*  
29/5/2023

**PRINCIPAL**

**PRINCIPAL**  
Kings College of Engineering,  
PUNALKULAM - 613 303